

B180T

18 m

The new GSR B180T reaches a new level in its telescopic range on 3,5t vehicles.

While maintaining the same traditional rigidity and sturdiness, this new model introduces significant innovation offering improved outreach and basket capacity.

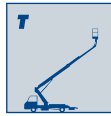
Technologically advanced, but still simple to use, the B180T with straight vertical legs within vehicle width and a horizontal outreach up to 12,8m, confirms the high quality standards and innovation of the GSR products.



GB

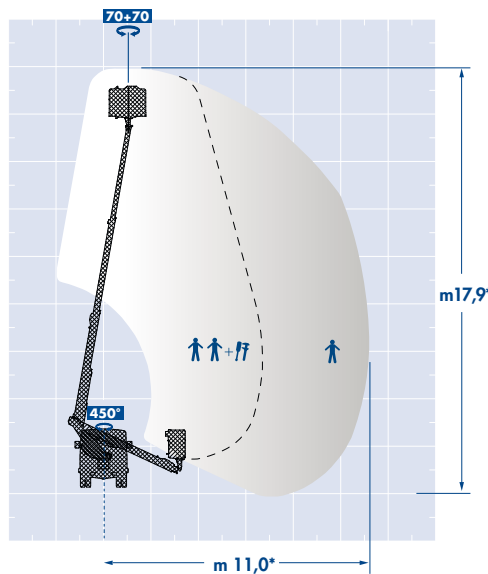
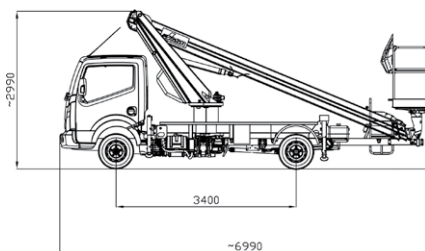


B180T

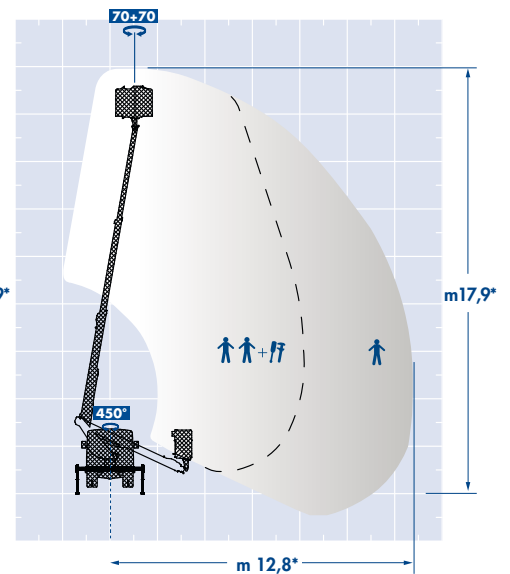


B180T

1. Improved outreach and basket capacity up to 300 kg .
2. Extendible or in shape configuration with vertical legs for an easy and quick set up.
3. Intuitive, simple to use controls with manual or automatic functions.
4. Simple and accurate devices, matching the highest and latest standards.
5. Light-weight booms with a robust, rigid structure.
6. Driver friendly, as easy to conduct as an average car.
7. Beginner friendly, ideal for self-drive hire.



B180T COMPACT VV



B180T COMFORT EV

MODEL	Working Height (m)*	Max. Outreach (m)*	Basket Capacity (kg)*	Turret Rotation (°)	Basket Rotation (°)	GVW min. (to)*
B180T COMPACT VV	17,9	6,6 / 11,0	300/80	450	70 + 70	3,5
B180T COMFORT EV	17,9	8,2 / 12,8	300/80	450	70 + 70	3,5

* Depending on vehicle



GSR SpA Via Lea Giaccaglia, 5 - 47924 Rimini (RN) - Italia
 Tel. + 39 0541 397811 - Fax + 39 0541 384491
 www.gsrspa.it e-mail: sales@gsrspa.it

Company with Quality Management System certified by DNV - ISO 9001:2008

Dealer