

B240PX

23,6 m

The new GSR B240PX introduces a new feature in the double-articulated up-and-over style of work.

While maintaining the same level of rigidity and sturdiness of the traditional PX range, this new model boosts the power offering unrestricted rotation and 250kg in the basket.

Simple to use and technologically advanced this machine, with straight vertical legs within vehicle width and a horizontal outreach up to 12,30m, confirms the high quality standards and innovation of the GSR products.



GB

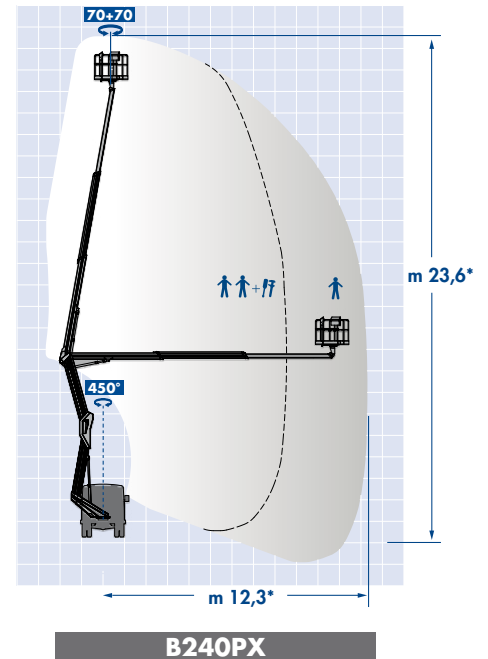
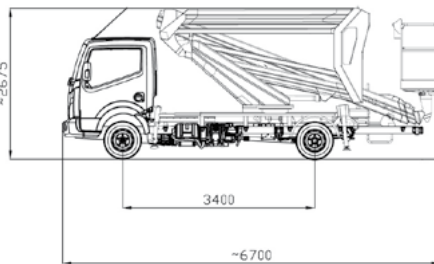
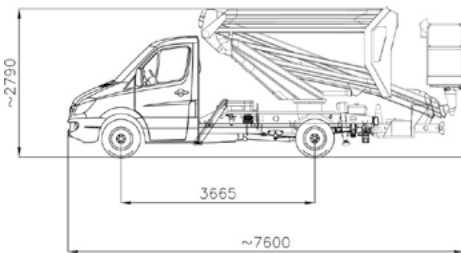


B240PX



NEW B240PX

1. Balanced and controlled swing of the articulations, making operations easier and safer
2. Unrestricted rotation with 250kg in the basket up to maximum height
3. In shape configuration with vertical legs for an easy and quick set up
4. 12,30 m up-and-over maximum reach
5. Intuitive, simple to use controls
6. Simple and accurate devices, matching the highest and latest standards
7. Light-weight booms with a robust, rigid structure
8. Driver friendly, as easy to conduct as an average car
9. Beginner friendly, ideal for self-drive hire



| MODEL | Working Height (m)* | Max. Outreach (m)* | Basket Capacity (kg) | Turret Rotation (°) | Basket Rotation (°) | GVW min. (to)* |
|--------|---------------------|--------------------|----------------------|---------------------|---------------------|----------------|
| B240PX | 23,6 | 12,3 | 80/250 | 450 | 70 + 70 | 3,5 |

* Depending on vehicle



GSR SpA Via Lea Giaccaglia, 5 - 47924 Rimini (RN) - Italia
 Tel. + 39 0541 397811 - Fax + 39 0541 384491
 www.gsrspa.it e-mail: sales@gsrspa.it

Company with Quality Management System certified by DNV - ISO 9001:2008

Dealer